

work order progress returns

Industries

- Discrete Manufacturers
- Mixed-Mode Manufacturers
- Light Manufacturing & Assembly
- Repetitive Manufacturing
- Lean Manufacturing

Integrated Modules

- Light Manufacturing (Sage)
- Advanced Manufacturing (Sage)

Suggested Modules

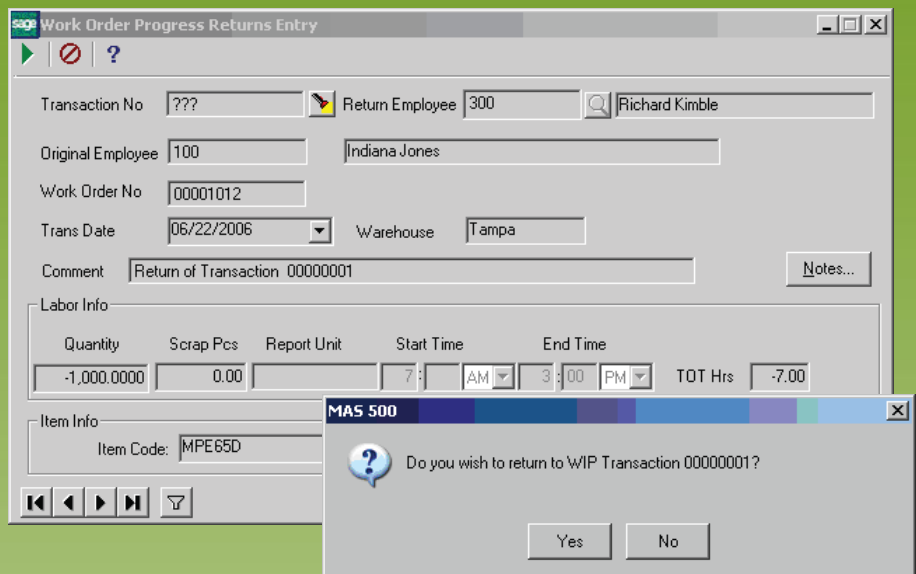
- Enhanced Work Order Suite (E2B)
- Enhanced Manufacturing Suite (E2B)

Benefits Overview

- Return cost and quantity of incorrect labor progress transactions to WIP
- Available for Light Manufacturing (aka Advanced Kitting) and Advanced Manufacturing modules
- Automatically reverses previously backflushed material and/or labor transactions (prior to progress step)
- Eliminates dozens of potential inventory and general ledger adjustments to correct inaccurate progress entries

ClientCare Plans

- Free Upgrades and Hot Fixes
- Unlimited Product Support
- Installation Assistance & Training



Correct adverse effects of inaccurate labor progress transactions in minutes

Progress Returns provides companies using Sage MAS 500 Light or Advanced Manufacturing with the ability to return quantities and costs to work orders that were posted in error

Currently, all manufacturing transactions can be reversed unless the transaction is related to the manufacturing progress entry step as defined on the work order.

When users make the mistake of reporting inaccurate quantities or posting transactions against incorrect work orders, these transactions cannot be reversed.

The only way to correct the mistake is to make manual inventory adjustments to correct inventory quantities for materials and finished goods and to make manual general ledger entries to correct the financial impact of the progress entry transaction. This is cumbersome for many customers especially for those customers who have multiple backflushed material and/or labor steps per work order.

Progress Returns streamlines the process of fixing incorrect progress transactions by automatically returning quantities and costs to work in process for the work order. This functionality is not a true reversal as assumptions must be made regarding costs since cost tiers may be different upon the progress return for customers using costing methods other than standard costing. Some typical scenarios in which Progress Returns will be useful are when:

- You entered the wrong work order for a progress transaction.
- You incorrectly entered the finished good quantity for a work order progress transaction.
- You forgot to enter a manual material or labor transaction prior to posting the progress transaction.

In most cases the manufacturing supervisor or cost accountant would be the person likely to take advantage of this feature.

Product Features

Transaction Look-Up	The user can look-up labor transactions for the progress steps on the Work Order Progress Entry screen using a standard navigator. The look-up is filtered to only display those transactions. Look-ups may be filtered by transaction number or by work order similar to material issue and labor entry look-ups.
Employee ID	The employee entering the Work Order progress return can enter their employee id so that this information is recorded against the progress transaction. This is needed since the employee processing the return may be different than the employee who posted the original progress transaction.
Transaction ID	A new transaction number will be generated for the work order progress return.
Transaction Comment	The transaction comment will automatically display text identifying the transaction as a return. This is identical to functionality existing in material and labor transaction reversal entries only the comment will be "Return of Transaction 12345" instead of "Reversed."
Inventory Transactions	Work Order Progress Returns will reduce on-hand inventory quantities for the finished good by returning these quantities to work in process for the work order tied to the original labor transaction. In addition, any backflushed materials associated with the progress step will also be automatically returned to inventory. There must be sufficient on-hand inventory to return the materials to the work order if the system is not set-up to allow negative on-hand inventory.
GL Transactions	The general ledger will be adjusted to correct the previous progress entry posting. Specific general ledger account transactions will be made based on the manufacturing item class defined for the original work order.
Cost Variance	For costing methods other than standard, a cost variance transaction may be needed as costs may have changed since the original posting of the labor transaction. This variance (if necessary) will be attributed to the progress step. The only time that there may be a variance for standard cost items is if the standard cost has changed since the originating progress transaction.
Lot/Serial/Bin Detail	The original lots, serial numbers, or bin quantities for the finished good or finished goods (multiple parts produced) posted to inventory will be returned to the work order. These lots, serial numbers, or bin quantities must be available in on-hand inventory or the labor progress return transaction will be prevented.
Production Entry Returns	Light Manufacturing and Advanced Kitting customers who use the Production Entry task will be able to process Production Entry Returns despite the fact that they cannot maintain or manually create work orders. Work order transactions processed behind the scenes will be returned in the same manner as Work Order Progress Returns with variances posted against the original labor transaction.
Multiple Parts Produced	Work Order Progress Returns will support multiple parts produced per work order. Multiple Parts Produced functionality is not available for Light Manufacturing or Advanced Kitting customers as defined by the Light Manufacturing module restrictions.
Integrated Security	Standard Task level security will be supported for both Work Order Progress Returns and Production Entry Returns.