

Industries

- Discrete Manufacturing
- Mixed-Mode Manufacturing
- Metal Service Centers
- Job Shop & Make To Order

Required Modules

- Light Manufacturing or Advanced Manufacturing (Sage)

Integrated Modules

- Inventory Management (Sage)
- Light Manufacturing (Sage)
- Advanced Manufacturing (Sage)

Suggested Modules

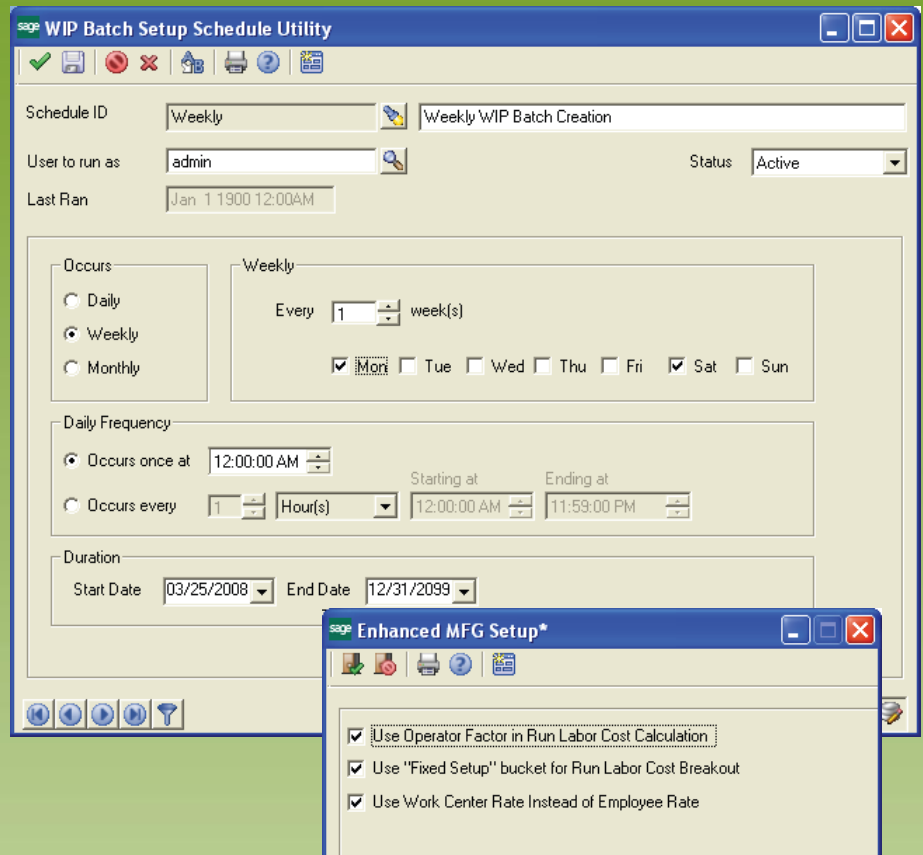
- Cost Modeling (E2B)

Benefits Overview

- Maintain Work Center Costs by item Unit of Measure such as pound or foot for operations such as heat treating
- Override standard costs at the routing level to use "generic" items for costing
- Override general ledger account segments by manufacturing department for cost analysis and reporting.
- Automatically close WIP batches on a scheduled basis
- Include crew rates in standard cost calculations

ClientCare Plans

- Free Upgrades and Hot Fixes
- Unlimited Product Support
- Installation Assistance & Training



Improve manufacturing cost accuracy and analysis / reporting with Enhanced Costing

Sage MAS 500's core functionality provides strong manufacturing costing capabilities. Enhanced Costing provides additional flexibility for manufacturers with outside process operations or more sophisticated costing requirements such as departmental reporting or in-house operations that require production reporting in alternative units of measure such as pounds.

The WIP Batch Schedule Utility provides a front-end to automate the process of closing open WIP Batches for Material Issues, Labor Entry, Progress Entry, and Job Close. You can quickly setup schedules to close batches daily, weekly, monthly, or on other user-defined cycles. New transactions

will post to the new batch so that accountants can review and post the closed batches.

Manufacturers can cost work centers by alternative units of measure like pound, foot, square inch, etc. You can also override standard costs for an item by routing and gain more insight into manufacturing costs by overriding general ledger account segments for cost analysis by manufacturing department code.

More accurate cost calculations are achieved by including the operator factor in standard cost calculations. You can also regenerate bills of material as-needed instead of regenerating all bills of material.

Product Features

WIP Batch Schedule

The WIP Batch Schedule Utility provides a front-end to automate the process of closing open WIP Batches for Material Issues, Labor Entry, Progress Entry, and Job Close. You can quickly setup schedules to close batches daily, weekly, monthly, or on other user-defined cycles. New transactions will post to the new batch so that accountants can review and post the closed batches.

Standard Cost Override

The standard cost for an item on a routing may be overridden. This is especially useful if you want to setup a single, "generic" item in inventory for such things as outside processing but you want different costs for each routing when you perform the bill of material cost roll-up. For example, you can create an inventory item for "plating" with one standard cost but define the cost for plating at different rates for each routing that includes a plating operation since rates often vary depending on the parts being plated or the vendor who provides the service.

GL by Mfg Department

Detailed cost reporting and analysis can be performed by manufacturing department by simply overriding a segment of the general ledger account with a unique code to identify the department.

WC Cost by Item UOM

You can now define the costing unit of measure by work center. This is especially useful for metal service centers or companies who perform in-house operations such as slitting, heat treating, plating, etc. where the operation may be coated and reported using feet, pounds, or other units of measure rather than "each." The work center maintenance screen now includes a checkbox to "Cost by Item UOM." In addition, labor steps on each routing display the Cost by UOM label. Work Orders created from routings using this new feature will include the unit of measure label as well. The cost calculation for the units of measure is: $\text{Item UOM Per Piece} \times \text{Quantity} = \text{Cost}$

Edit WO Step Copy

Sage MAS 500 does not allow the user to maintain the Step Complete Flag directly from Work Order Maintenance. This functionality is useful for users in situations where the employee forgot to mark the step complete when they posted the original transaction against the Work Order. This enhancement enables the Step Complete Flag in Work Order Maintenance so that users with appropriate permission can manually change the flag directly from Work Order Maintenance.

Material Issue Reversal

In Sage MAS 500 6.3, users could reverse a material transaction even if some of the material was no longer in WIP due to progress transactions. Beginning in Sage MAS 500 7.0, reversal of material issues are prevented if quantities have been progressed since the original quantity is no longer available to reverse. This poses a problem for some companies who need to correct material issue transactions by doing a reversal after the progress transaction has been processed. For example, if you issue a quantity of 100 items to a work order (requiring 1 per each for finished goods) and progress 20 finished goods to inventory, then WIP shows a quantity of 80 items in WIP and prevents the reversal of the original material issue. However, if the original material, quantity of material, or lot for the material was incorrectly entered during the original material issue, the user cannot reverse the original transaction and then enter a new material issue transaction to correct them problem.

MFG Crew Rates

Use the operator factor on the routing detail and the crew rate adder rate on work center maintenance to define a crew rate to be used when calculating the standard cost for a crew when rolling up bill of material costs.

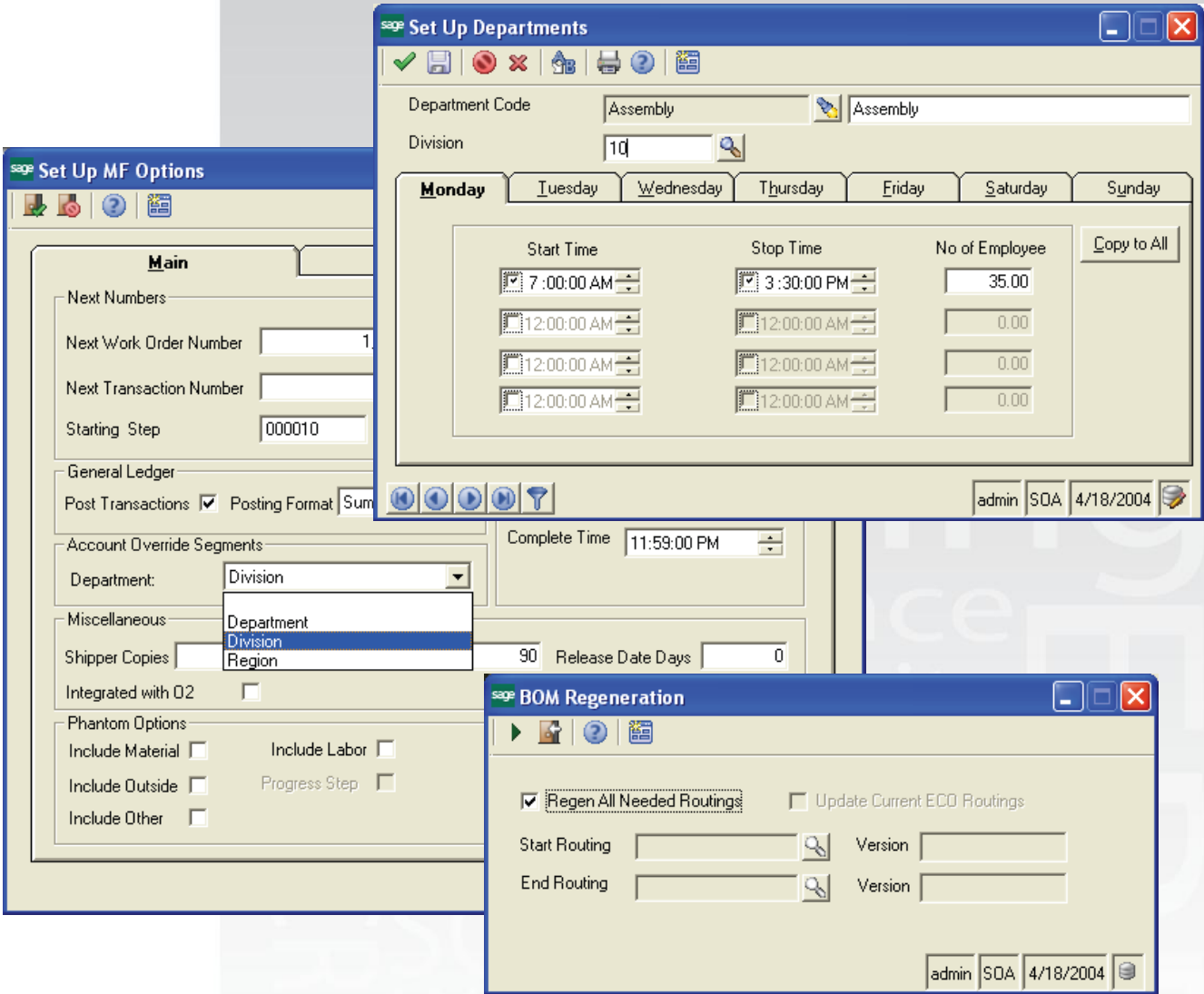
Product Features

Auto BOM Regeneration

The Bill of Material Regeneration Utility now has an option to regenerate bills of material only "As Needed." This enhancement is very useful for companies who utilize common components in multiple finished goods since any changes to the component routing and bill of material are not automatically recognized by the parent routing and bill of material or MRP. A modification to the BOM Regeneration Utility now tracks changes made to component routing and bills of materials and only regenerates the routing and bills of material for parent items that reference the component routing. This saves a lot of time since companies do not have to regenerate the bill of materials for all existing routings in their database. Further, a SQL job is available to automate the regeneration process so that the regeneration process is run automatically based on user-defined schedules.

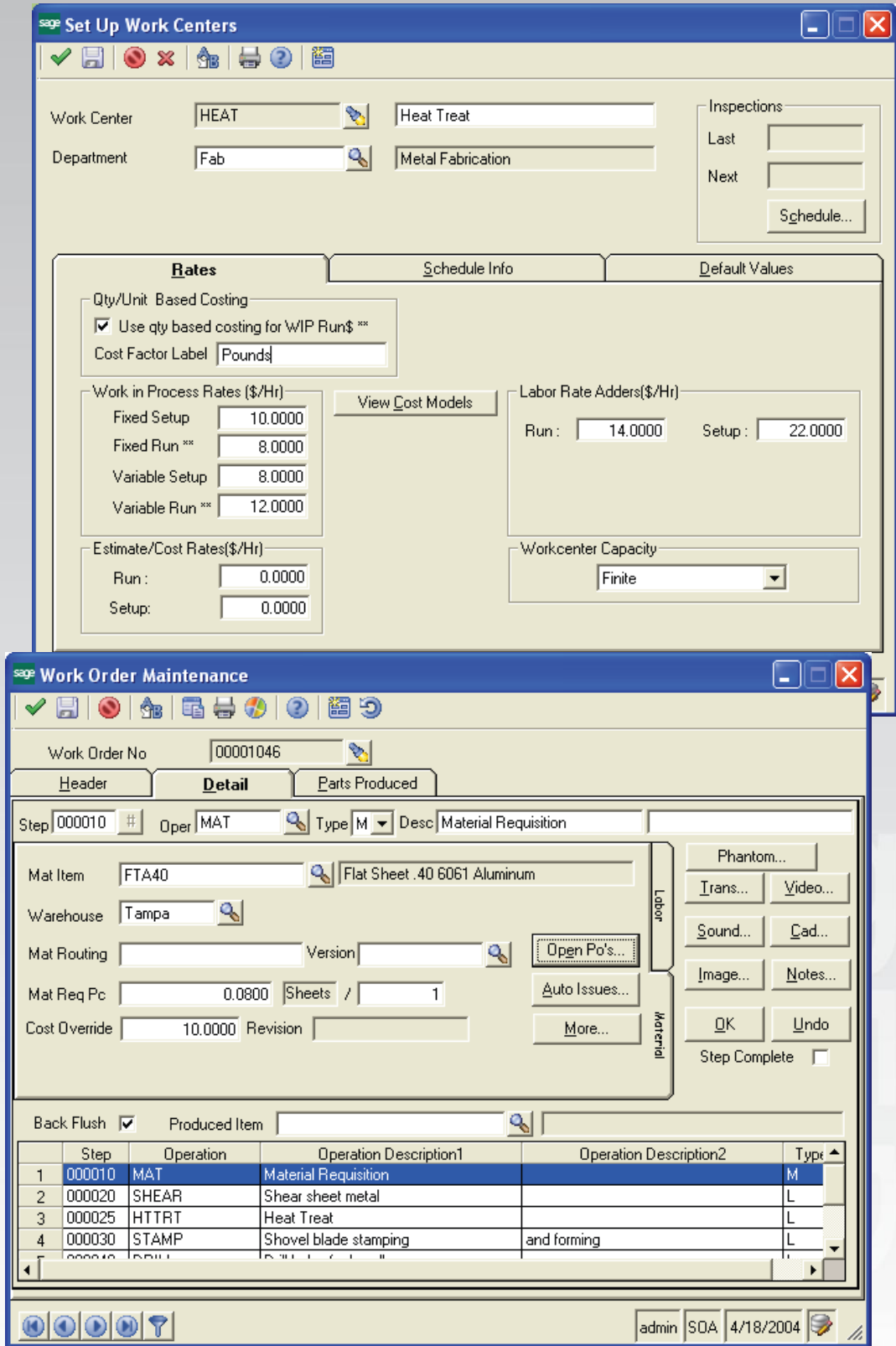
Labor Cost Breakout

Standard Sage MAS 500 manufacturing combines direct labor costs with variable run and variable setup. Companies who do not have setup operations may optionally use the Variable Setup cost bucket for direct labor posting to a specific GL account for reporting and analysis.



©2009 e2b software, inc. All rights reserved. Reproduction in whole or in part without permission is prohibited. The capabilities, system requirements and/or compatibility with third party products described herein are subject to change without notice. Contact e2b software for current information.

Product Features



©2009 e2b software, inc. All rights reserved. Reproduction in whole or in part without permission is prohibited. The capabilities, system requirements and/or compatibility with third party products described herein are subject to change without notice. Contact e2b software for current information.